



MONTHLY MEMBERSHIP PROGRESS REPORT

District 26 M6

Results as of: 5/31/2016

GMT: HAL GRIFFIN

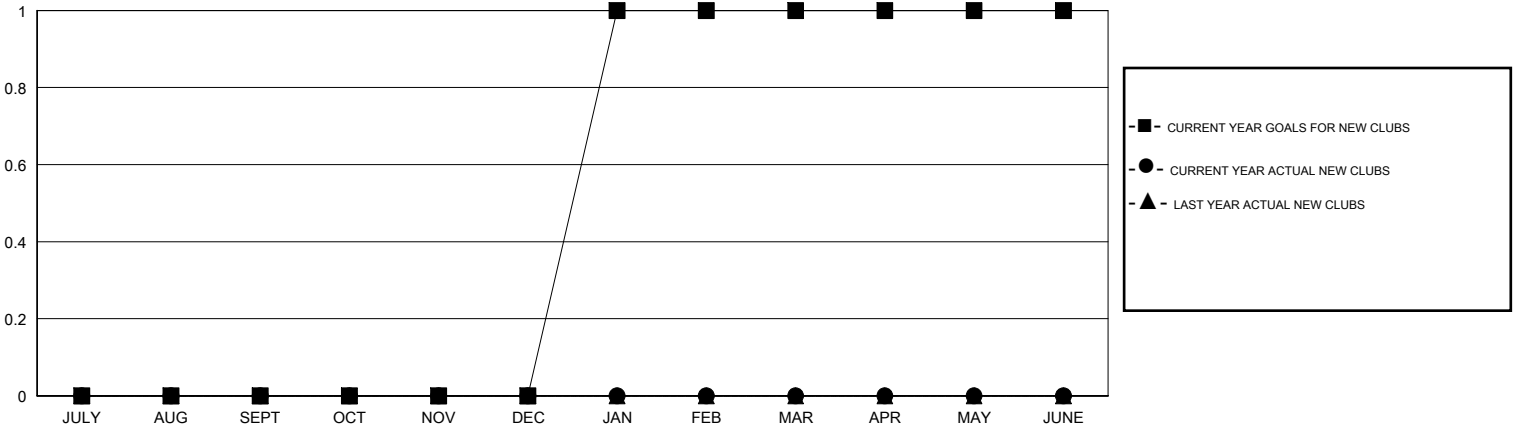
LOCATION MISSOURI

GMT CA 1

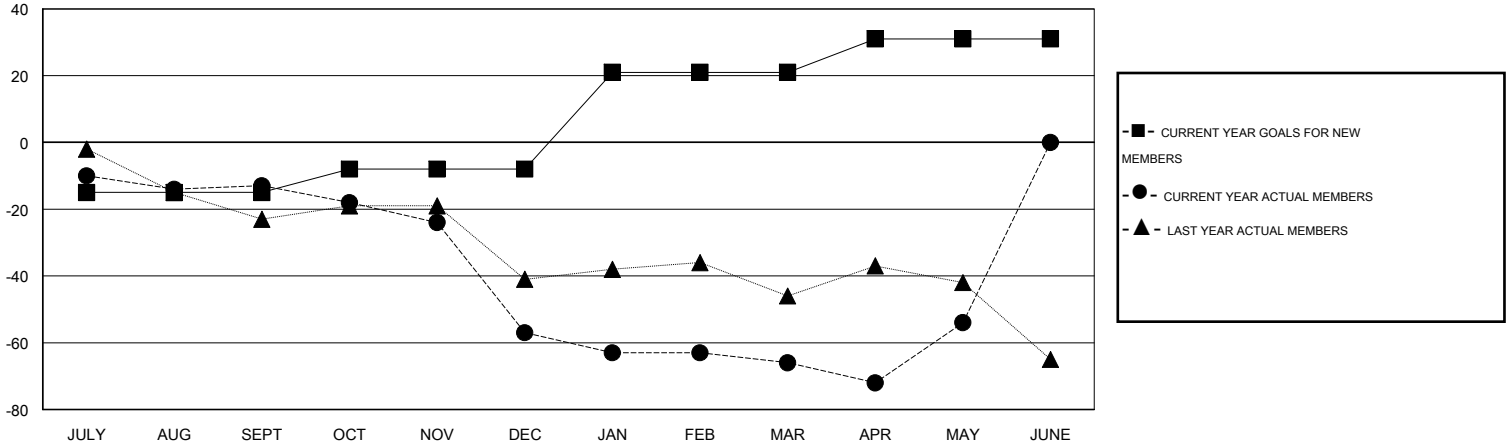
Clubs				
RESULTS FOR 2015-2016				
QUARTER	NEW CLUB GOAL	NEW CLUBS	DROPPED CLUBS	NET GAIN/LOSS
JULY/AUG/SEPT	0	0	0	0
OCT/NOV/DEC	0	0	1	-1
JAN/FEB/MAR	1	0	0	0
APR/MAY/JUNE	0	0	0	0

Members				
RESULTS FOR 2015-2016				
QUARTER	NEW MEMBER GOAL	CHARTER AND NEW MEMBERS ADDED	DROPPED MEMBERS	NET GAIN/LOSS
JULY/AUG/SEPT	-15	18	31	-13
OCT/NOV/DEC	7	14	58	-44
JAN/FEB/MAR	29	20	29	-9
APR/MAY/JUNE	10	30	18	12

GOALS AND ACTUAL NEW CLUBS CUMULATIVE



GOALS AND ACTUAL MEMBERS CUMULATIVE



DROPPED CLUBS: 1	29 CLUBS OF 50 ADDED 1 OR MORE NEW MEMBERS	GENDER DISTRIBUTION MALE 810 (70.62%) FEMALE 337 (29.38%)
DROPPED MEMBERS DECEASED 17 CLUB CANCELLED 14 OTHER 105 TOTAL 136	CLICK HERE FOR HEALTH ASSESSMENT DATA	FAMILY UNIT MEMBERS 249 HEAD OF HOUSEHOLD 123 NON-HEAD OF HOUSEHOLD 126